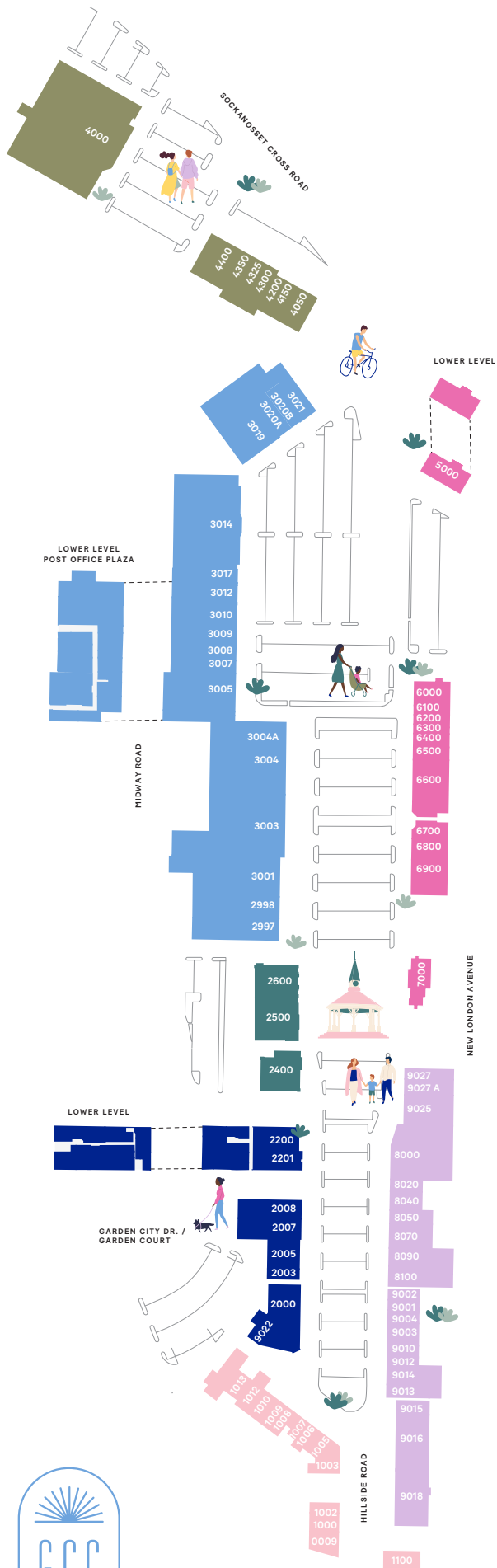
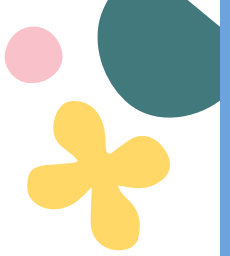


GARDEN CITY CENTER



BEAUTY & WELLNESS

- 8050 BATH & BODY WORKS
- 4300 EUROPEAN WAX CENTER
- 3014 LA FITNESS
- 9001 MINILUXE
- 6100 MODERN ACUPUNCTURE
- 2998 SEPHORA
- 3020B SKIN SPA NEW YORK*
- 4200 SUPERCUTS
- 3004A ULTA*

FASHION & STYLE

- 8100 AERIE
- 2000 ANTHROPOLOGIE
- 8000 ATHLETA
- 2007 BANANA REPUBLIC
- 9022 BOOTY BY BRABANTS
- 8040 CARTER'S
- 2005 CHICO'S
- 6800 THE CHILDREN'S PLACE
- 9003 FATFACE
- 9015 FRANCESCA'S
- 8000 GAP
- 2600 J. CREW
- 2201 J. JILL
- 3020A JOS. A BANK
- 9025 LOFT
- 1003 LULULEMON
- 2200 MADEWELL*
- 3007 NEW BALANCE
- 8070 PROVIDENCE DIAMOND CO.
- 3004 OLD NAVY
- 1000 SOMA INTIMATES
- 1008 SUNGLASS HUT
- 1009 SWAROVSKI
- 9018 TALBOTS
- 9016 VICTORIA'S SECRET
- 9010 WHITE HOUSE | BLACK MARKET

HOME

- 3003 THE CONTAINER STORE
- 3001 CRATE & BARREL
- 3009 ETHAN ALLEN
- 9004 OHANGA
- 2500 POTTERY BARN
- 0009 SLEEP NUMBER
- 6200 SURFACE HOME DESIGN
- 9014 WILLIAM SONOMA

FOOD & DRINK

- 3021 ANTHONY'S COAL FIRED PIZZA
- 1013 APPLEBEE'S
- 2997 ASIA GRILLE
- 2400 AVVIO RISTORANTE
- 2003 B. GOOD
- 1012 BISTRO 22
- 4150 BOSTON MARKET
- 1010 CHASKA
- 9027 CHIPOTLE MEXICAN GRILL
- 4050 DUNKIN'
- 1002 EDIBLE ARRANGEMENTS
- 6000 LEGAL SEA FOODS
- 7000 NEWPORT CREAMERY
- 9002 PINKBERRY
- 1005 STARBUCK'S
- 6600 TAVERN IN THE SQUARE
- 6300 TROPICAL SMOOTHIE CAFE
- 4000 WHOLE FOODS

SPECIALTY & SERVICES

- 6400 AT&T
- 4350 BANK 5
- 5000 BANK OF AMERICA
- 1100 CITIZEN'S BANK
- 4325 COURTESY CLEANERS
- 3019 L.L. BEAN
- 1006 MODMAMA
- 8090 THE PAPER STORE
- 3005 PARTY CITY
- 4400 PET SUPPLIES PLUS
- 9012 SWEENOR'S CHOCOLATES
- 3017 VERIZON
- 8020 YANKEE CANDLE

SOMETHING DELIGHTFUL AWAITS

*Coming Soon

